

AWRE PARISH COUNCIL and BURIAL AUTHORITY

Annual Parish Meeting held at Awre Village Hall
on Tuesday 24th May 2016

Present: Councillor M Marshall in the Chair
Councillors R Fellows, K Stevenson, H Pike, G Bullock, P Deighton, A Blake.

Sue Hare (Blakeney Youth Club), Police Sergeant Sara Sleeman (Gloucestershire Constabulary),
District Councillor G Hughes, Kate Wyatt (Blakeney Hill Growers), Debbie Mynett, Tricia Cowen,
Judy Awre and John Stevenson.

Clerk – D Preece.

Apologies: accepted by the meeting. Cllrs H Clarke, K Allen.

1. MINUTES OF LAST MEETING

The Minutes of the last meeting were approved and signed by the Chairman as a true record of the meeting.

2. INFORMATION FROM CLERK ON MATTERS ARISING FROM MINUTES

None.

3. CHAIRMAN'S REPORT

Presented by Cllr Marshall. See Annexe A attached.

4. ANNUAL ACCOUNTS

See Annexe B attached.

5. REPORT OF POLICE REPRESENTATIVE

Sergeant Sleeman stated that the Police Station in Lydney would close on 7.6.16, with the Police moving to the re-furbished Coleford Police Station.

There were a number of burglaries during the past year, up and down the 'A48 corridor'. These have now ceased with the apprehending of a gang by West Mercia Police.

The newly re-elected Police Commissioner M Surl has funds available for community projects.

She will arrange for a CPSO to be in contact with the Speeding project about to take place in Blakeney.

6. DISTRICT COUNCILLORS REPORT

Councillor G Hughes reminded people to register to vote in the European Union Referendum before the deadline on 7.6.16.

The District Council is running a Dementia Awareness Campaign currently and having attended a session, he recommended it.

There is also an 'Anti-litter' Campaign underway in the District.

The FODDC AGM will take place on 26.5.16.

He thanked the Parish Council for its co-operation during his first year as a Councillor.

7. COUNTY COUNCILLORS REPORT

Cllr Leppington has had to attend another meeting, but although he was hoping to attend he did not arrive before the end of this meeting.

8. REPORT FROM BLAKENEY SCHOOL REPRESENTATIVE

Matt Baker read out a report prepared by Head Teacher Brett Stevenson. See Annexe C attached.

9. REPORT FROM AWRE VILLAGE HALL REPRESENTATIVE

The Clerk read a report supplied by K Whalley, Chairman of the Board of Trustees. See Annex D attached.

10. REPORT FROM BLAKENEY RECREATION CENTRE REPRESENTATIVE

No representative attended and no report was supplied.

11. REPORT FROM BLAKENEY COMMUNITY GREEN

No representative attended and no report was supplied.

12. REPORT FROM BLAKENEY HILL GROWERS

A film illustrating the activities of the Growers was shown by Kate Wyatt and a report presented. See Annexe E attached .

13. REPORT FROM BLAKENEY YOUTH CLUB

A report was presented by S Hare. See Annexe F.

14. OTHER MATTERS CONCERNING THE COUNCIL

Cllr Stevenson stated that a Road Safety Meeting would take place at Blakeney Recreation Centre on Sunday next. Speed Camera training would commence at 10.30 am. She encouraged as many people as possible to attend.

This is part of the campaign to reduce speed in Blakeney. A number of measures are proposed to raise awareness, but the fight to reduce the speed limits or get an additional crossing will take a long time.

The Clerk informed the meeting that Cllr Leppington had referred the cutting back and clearing of weeds on New Road, Blakeney to County Highways.

Judy Awre thanked the Councillors for the unpaid work that they undertake for the community, and regretted the lack of attendance at the meeting.

The Chairman thanked Sue Hare for providing the refreshments.

The meeting closed at 8.15pm. Refreshments followed.

CHAIRMANS REPORT-2015/16

I would like to give you my report on the activities of the Parish Council during the past year.

I will begin by thanking my fellow Councillors for their efforts and support during the past year.

I would also give my own and the Councils thanks to our District Councillor Gareth Hughes and our County Councillor Richard Leppington for their help and support throughout.

We have now completed the registration of Awre Village Green with HM land registry in the name of Awre Parish Council.

Also following a commitment made last year to fund a defibrillator for Awre village this has been purchased and was installed just after Christmas. This is now operational and is sited just outside of the village hall. A training session was held with a really good turn out of members of the community.

Another commitment made last year was the re-roofing of the lychgate at Blakeney Cemetery – this has been completed along with a new coat of preservative to the timberwork and looks in much better shape for it.

The Council took on a new contractor for the grass cutting at the cemetery and we are very pleased with the work he has carried out this year.

Our thanks also to Michael Fisher for the grass cutting work he carries out around the parish. As usual he just gets on with it but always seems to do what is required at the right time.

As always we continue to work with Gloucestershire Highways on various issues throughout the Parish

At present, following a representation from parents of children at Blakeney School the Council represented by our two lady councillors – Kim Stevenson and Helen Pike are in negotiations with Highways to try and get the best possible outcome for traffic calming through Blakeney village to ensure increased safety for all and in particular the children at our school.

We support any scheme fully as I am sure you all do.

We are currently considering support for the foresters forest programme – this is a new scheme being run with the heritage lottery fund which will provide funding for a number of selected projects throughout the forest.

We are particularly interested in the possibility of creating a cycle track from Mallards Pike to Wenchford and also the renovation of the lime kilns and the construction of the salmon ladder in the village.

This year the Council has had an increased number of planning applications to deal with including several major applications.

We made several donations to local organisations during the year, which it has become our practice to do.

Once again we produced the Parish Calender, which I hope the residents of our community find useful.

I would like to thank all contributors of photographs, Richard Fellows and Bob Watters for the production of the calendar and also thank BobWatters, David Preece, Blakeney Hill Growers, and of course Richard Terry for the delivery of them.

For this year we will try and progress some outstanding projects for example – refurbishment of red telephone boxes, the same of various benches in the parish ,silt bank removal below the weir in the village and the finalisation of the Parish Emergency Plan.

**AWRE PARISH COUNCIL
and BURIAL AUTHORITY**

Year to 31.3.15 £	PAYMENTS & RECEIPTS TO 31.3.2016	£
24,869	Brought Forward	31,736
	Receipts	
14,389	Precept	15,580
12	Bank Interest	12
1,949	VAT Refund	639
17	Misc	10
4,981	Grants	1580
	Calor/Bledisloe Cup awards	
<u>21,348</u>		<u>17,821</u>
500	Cemetery: Precept	
2,675	Burial Fees/Memorials	1,027
<u>49,392</u>		<u>50,584</u>
	Payments	
3,312	Donations	1813
1,189	Admin. Exps. (Stationery,Postage,Telephone etc.)	1214
4,235	Clerk's Salary	5196
811	Insurance	794
329	Room Hire (Meetings)	286
740	Grass Cutting/Maintenance	1143
175	Audit Fees	175
406	Subscription GAPTC	427
84	Advertising	
	Election expenses	143
1,686	Toilet maintenance/Refurbishment	1,421
1,332	Annual calendar	1332
509	Training	380
227	Printing of Parish Newsletter	185
60	Flowers for tubs	387
187	Amenities	
	Section 137	2075
636	VAT	1564
1,738	Cemetery: Maintenance & Grass Cutting	7740
31,736	Cash at Bank	24,309
<u>49,392</u>		<u>50,584</u>

ANNEXE D

AWRE VILLAGE HALL REPORT TO THE PARISH COUNCIL FOR THE YEAR ENDING 14/5/16

The village hall has continued through the year to be an important venue for the people of the village. The socials held every second Friday evening have continued to be popular with as many as 40 people enjoying a meal and drinks. Other uses include Christmas gatherings, coffee mornings and Scottish dancing evenings. As a venue for hire the hall has again played an important role being used for functions such as wedding receptions, children's parties, courses, meetings and as a polling station.

Thanks mainly to the socials but with important contributions from hall hirings the finances are healthy and all outgoings are being covered.

The fabric of the building continues to need attention. In particular repairs to the hall floor and weatherproofing of the south wall have been needed.

Equipment purchases for the hall have included a microwave, cooking pans and a TV.

Importantly for the village a defibrillator has been installed on the outside east wall.

The hall continues as a registered charity but with a change in status to a Charitable Incorporated Organisation (CIO).

The board of trustees now numbers nine, three people having retired at January's AGM and four people having joined the board.

Ken Whalley

Chairman of the Board of Trustees



Blakeney Hill
GROWERS

Annual Report

March 2015 April 2016



Chairs Report

So our fifth year has been as busy as ever, it is always tempting here to tell you of what the portions have been up as that is really where the fun and the action takes place but you will have to read the portion reports for that. What I am clear on is that everyone has been working hard and maintaining what we have built up and developing some areas significantly too.

At last years AGM we decided it was important to try and communicate with members more and to this end we have circulated all the notes from our management meetings and attempted to put more on the Facebook page. The website has been transferred to Word press making it easier to keep up to date so in the coming year our website can be used for blogging, this and Facebook are open to anyone to add pictures and updates on Blakeney Hill Growers related activities.

Our management meetings have been shorter and more frequent this year, we have met on the 1st Monday of each month at 7:30, circulating round each others houses and have usually been home by 9:30. They are still sociable, with wine and snacks but because they are more frequent there is more routine and less business that needs dealing with. If anyone would like to join us we would be delighted, but even if you are not interested in joining the management group the meetings are always open to any member to come along to, either with an issue or without.

It has been fantastic that we have gained two more active members and their families this year as well as a family that live in London but come several times a year to Viney Woodside and pop in to help with milking and on the vegetable patch. Best of all they all have young children, which always brings lightness and joy to the work. On a sad note we have also lost Tim who died at the beginning of the year, he was with Blakeney Hill Growers from the beginning and was invaluable with his woodworking skills and his charm, he is sadly missed.

Many of you will remember Hollie Crawshaw who visited on several occasions to take photographs that she has used as part of her degree, specialising in Agricultural photography. She has very kindly given us a book of her Blakeney Hill Growers pictures and a slide show that you can see on you tube following this link: <https://youtu.be/iskdByMm1JE>

I think that pictures paint a thousand words so I will finish with the hope that you can see the last year in pictures and looking forward to another productive year building fertility, friendship and Food.

Rebekah Hoyland
Chair

Financial report

We have had an uneventful year financially, with five of our six portions being in surplus. The stars were our fecund goats whose kids sold for £580. A financial summary portion by portion is shown below.

90% of the expenses in the General Fund are accounted for by rents, insurance and infrastructure additions / repairs, which are not costed directly to the portions. Our £6 annual membership fee covers insurance but the balance of the expenses is funded by the portion account surpluses.

We have a surplus of £240 on the year and a running surplus since our founding of £969.

Richard Andrews.
Treasurer.



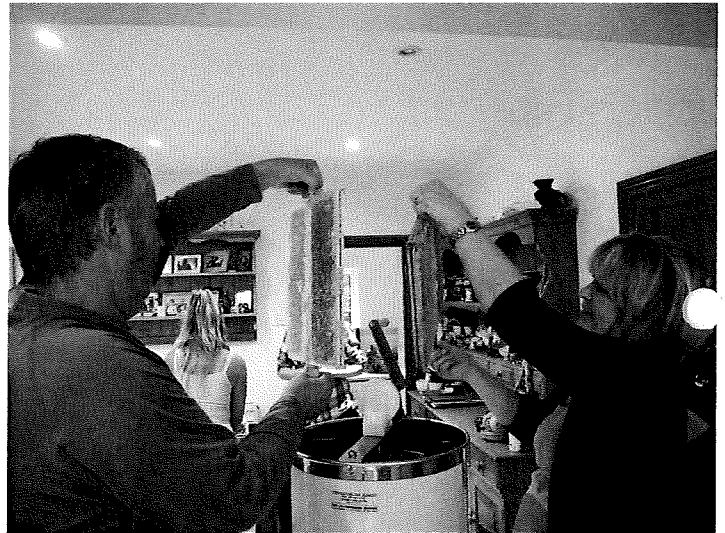
BEE PORTION REPORT



Bad news to report, we have lost 3 of our 6 hives over the winter. Two of the hives were full of dead bees, one was completely empty. When I gave the hives feed in early March, all our colonies seemed viable. It is both sad and worrying. Last autumn all six hives had laying queens and good numbers of bees. It probably wasn't starvation since all the

hives contained sealed honey and had additional fondant feed available. The winter weather wasn't the best for the bees; it's been a long wait for spring weather. Maybe the deaths are linked to varroa and this year we will be more vigilant with our control.

Last autumn we harvested 75 pounds of honey, half was distributed amongst the portion members and the rest sold off to help with our expenses.



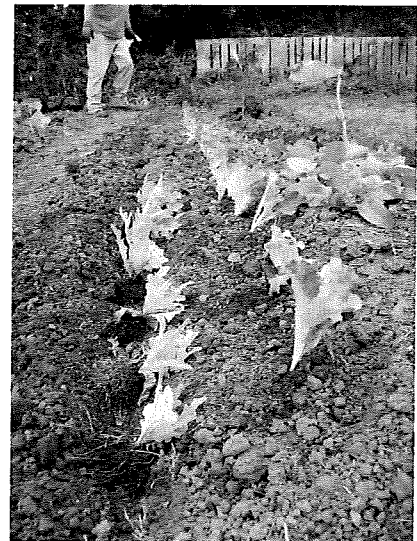
Over the winter the bank at the back of the apiary turned from nettle plantation to an area ready to be planted out as our bee garden. The area in front of the shed is now paved and we have steps all the way down to the hives.

Nil desperandum. This year we will rebuild our colony numbers from our survivors, consolidate and extend our bee keeping skills, and set up our observation hive. Here's to a successful and productive summer.

Richard Andrews

Vegetable Portion.

A steady year, we have again managed to harvest all year round with the staples of leeks and kale over the winter and salad, tomatoes and cucumber over the summer. We are divided on the artichoke front, some love the globe version and some the Jerusalem so we are now growing both! We have planted some hops with the help of Tom, who is also a member of a beer-growing group; look out for a Blakeney Hill beer, or maybe Christmas decorations. Building fertility on our poor soil is an on-going mission but compared to four years ago when we first started to dig the



soil is a joy to work. We are a steady group, meeting each Wednesday afternoon for a couple of hours. Last summer Ruth and Annabel

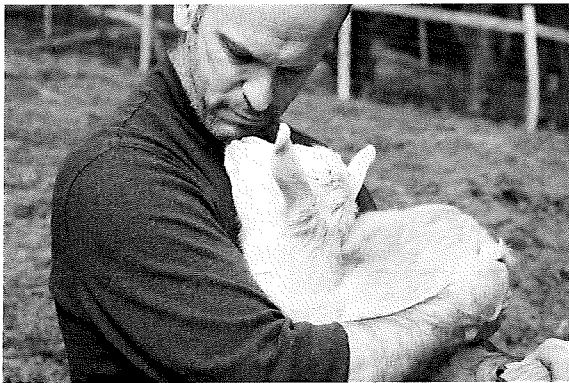


joined us. Annabel has become a keen member of the team, and our youngest gardener.

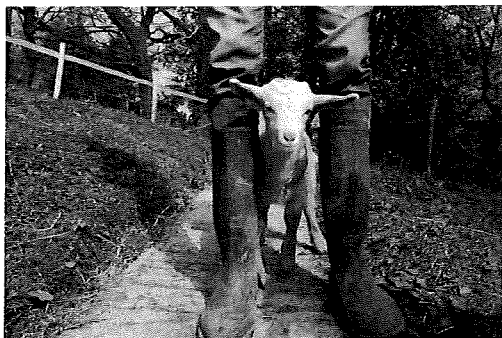
We are wondering what to do with the patch where the bees were up until last year, it has no topsoil but is potentially flat, if anyone has ideas and or time and energy to devote to this do come and see us one Wednesday afternoon!

Rebekah Hoyland

Goat Portion



Our three nanny goats are doing well. Last Year, after an autumn visit from a Pigmy Billy, all three of our nanny goats had twins. All were sold to good homes.



This year Ami and Ava visited a Golden Guernsey Billy and each had twins, a boy and a girl each. Three are for sale and will be available to go to new homes from eight weeks old.

early kidding we have a milking season ahead with to go around. Milk is amongst the team members and any surplus available to BHG members. We make cheese, yoghurt and ice



With long plenty shared is

Cream.

We are keen to bring in new members, especially those who want to learn to milk and get involved in the day to day running of things. Everyone is welcome, and we always do our utmost to work around our members' busy lives.

(Thanks to Andy Squiff for these pictures above of the goats, see our

for



Facebook page more!)

Ducks

We now have 3 Khaki Campbell ducks and one runner, who are laying well. The goat portion members also look after the ducks and share the eggs. We intend to increase our flock this year and are on the look out for some more Khaki Campbell's.



Sheep

Last year our two ewes gave us four lambs and we also enjoyed some

wonderful meat. Which was delicious! Our sheep are Soay sheep, which are a primitive breed of domestic sheep descended from a population of feral sheep on the island of Soay. They are very goat like in appearance and temperament. They help us maintain the land in a sustainable way and provide meat and wool.

We will be running down the sheep portion and having a year or two off breeding until we identify someone to take on the leadership of the portion.

Kate Wyatt

Chicken Portion

We have had another very busy year in the chicken portion. Both runs have been upgraded and we now have a more fox-resistant enclosure ... plenty big enough for free-ranging, but with a sturdy six foot fence to help keep our hens safer. So far this has proved really successful and there's the added bonus of no more chasing round the two acre field for the birds who don't fancy coming in at night. We have more paths and wind and rain protected areas in the runs which make both our and the chickens' lives more pleasant in inclement weather. All in all, the daily routine is much easier and quicker and after a slow start, they're laying well.



It's an absolute pleasure to be responsible for these creatures,
and their eggs are delicious!

Annie Mckie

Blakeney Youth Club -Report on activities during 2015-16, for Awre Parish Council

The Club Leader, Sam Jelly reports that the club is going from strength to strength.

There are 22 signed up members and 13 non members with average weekly attendance of 25 children, all enjoying the upgraded facilities.

Despite requests for support from local parents, there are only 6 core volunteers who keep the club running. More help would be greatly welcomed.

As well as weekly meetings during term times we have also held the usual Halloween Party and Xmas disco, both of which were open to all the children in the village within the 7 – 11 age group.

There is a block booking 3 times per week for the Yoga and Tai Chi groups and the premises are used once a week for private dance practise. On average it has been hired once a month for children's parties. It has also been used on a number of occasions by different groups within the parish.

Thanks to the donations from the Parish Council the refurbishments to the outside area have now been completed, and we have been able to replace a faulty central heating boiler.

The toilets are in urgent need of refurbishment and a recent donation of £600 from a local resident means that this work can now go ahead.

Members of the Youth Club Committee are involved in the organisation and running of the annual Blakeney Duck Race, which means that the Youth Club is able to benefit from a share of the profits.

This money, the donation from the Parish Council, income from hire and increased subscriptions, pay not only for the yearly running costs which include insurance, fuel bills, water rates and repairs, but mean that we can now employ a regular part time cleaner.

The Committee would once again like to thank the Parish Council for its support.

24.05.16